

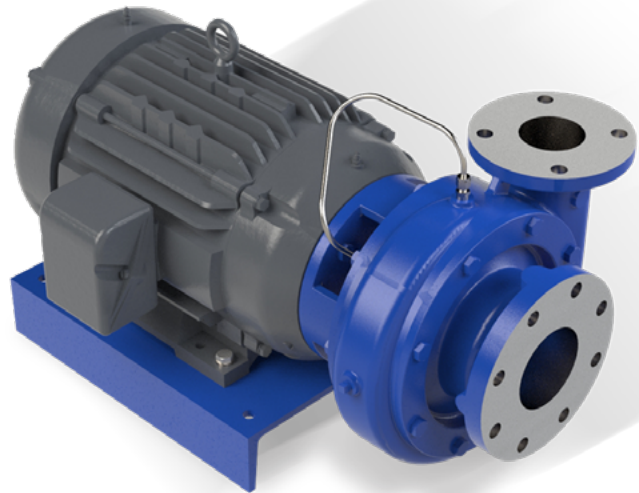
# GH

## Now available with a more compact JM shaft extension.

The GH horizontal end-suction pump offers an enclosed-impeller design with a close-coupled configuration. All wetted surfaces are available in all-iron or 316 SS fitted construction.

This model is available in many sizes, for flow rates to 2,500 GPM, heads up to 400 feet and speeds up to 3,550 RPM. It is designed for use with standard NEMA JM shaft motors in applications including industrial, commercial, municipal and infrastructure.

Our pumps are manufactured with the highest standards of quality. Strict controls throughout the manufacturing process, along with high hydraulic efficiency, ensure reliable operating performance and low lifetime cost.



### GH WITH JM SHAFT EXTENSION



Quality Management System Approval Certification Number 95-370h



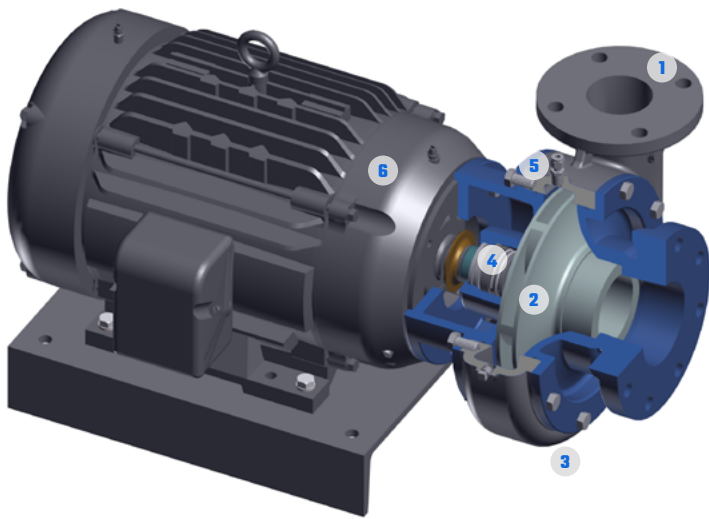
### STANDARD MATERIALS

Casing	Cast Iron
Impeller	Cast Iron or 316 SS
Shaft Sleeve	316 SS
Shaft	Carbon Steel
Bearing Frame	Cast Iron

### MECHANICAL DATA

Rotation	Clockwise from Motor End
Input Power	Up to 150 HP
Temperatures	Up to 250° F
Connection	NPT or ANSI Flat-Face Flanges





### 1 FLANGES

ANSI flat-face cast iron or 316 SS flanges for all sizes greater than or equal to 2" discharge

### 2 IMPELLER

High-efficiency design in cast iron or 316 SS fitted

### 3 CASING DRAIN

Heavy-walled casing with vent and drains for easier maintenance

### 4 MECHANICAL SEAL

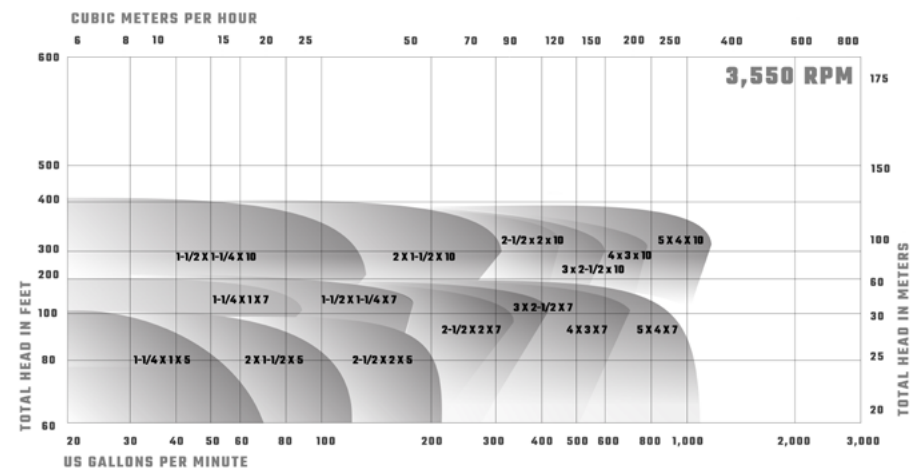
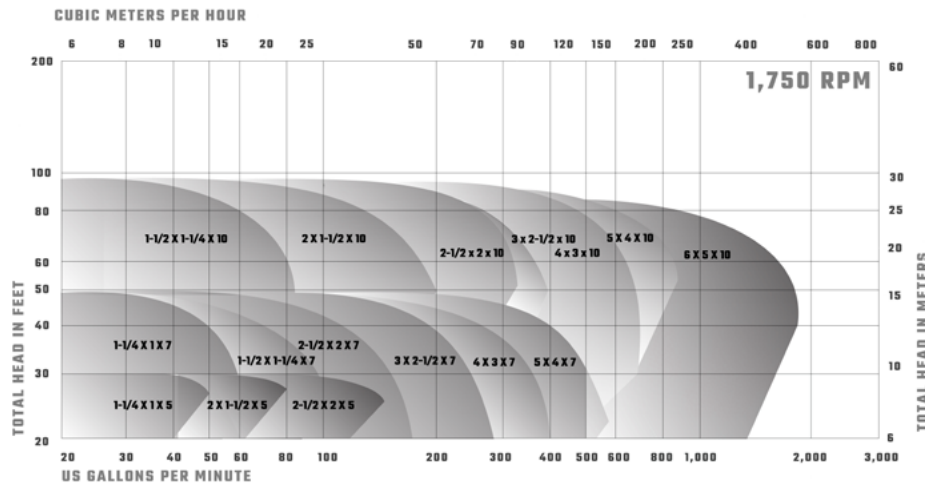
Seal chamber accommodates component seals, with Plan 11 flush available

### 5 BACK PULL-OUT

Allows removal of rotating elements and replacement of the shaft, impeller or mechanical seal without disturbing system piping

### 6 MOTOR

Standard NEMA motor sizes can be fitted with no modifications



## HYDRAULICS

- Flows to 2500 US GPM (570 m<sup>3</sup>/hr)
- Heads to 400 feet (125m)
- Efficiencies to 83%
- Power to 150 HP (110 KW)
- Speeds up to 3,550 RPM
- Solids to 1.250" (32mm)

## APPLICATIONS

- Commercial
- Industrial
- Municipal and Infrastructure
- Aquatics

# Contact us

2415 Park Avenue  
Muscatine, Iowa 52761  
USA

(563) 263-3410  
sales@carverpump.com  
www.carverpump.com